

The Nucleic Acid Experts.

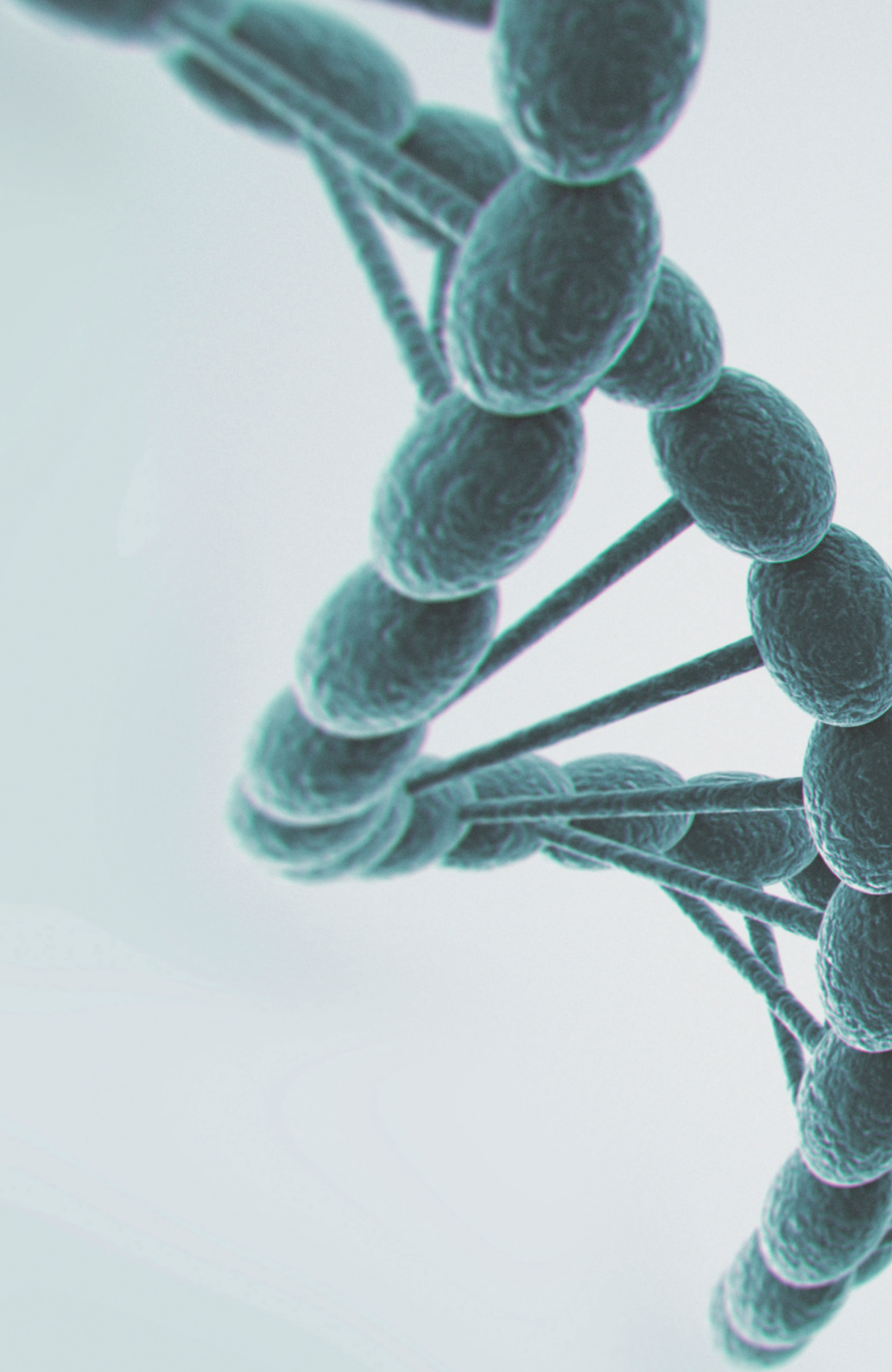


Applications

		EchoLUTION™ Viral RNA/DNA Kit IVD product	EchoLUTION™ Viral RNA/DNA Kit	EchoLUTION™ Tissue DNA Kit	EchoLUTION™ Tissue RNA Kit	EchoLUTION™ Cell Culture DNA Kit	EchoLUTION™ Cell Culture RNA Kit	EchoLUTION™ Blood DNA Micro Kit	EchoLUTION™ FFPEDNA Kit	EchoLUTION™ FFPE RNA Kit	EchoLUTION™ Buccal Swab DNA Kit	EchoLUTION™ Plant DNA Kit	EchoCLEAN DNA CleanUp Kit (for DNA >50 bp)	EchoCLEAN Organic Solvent DNA CleanUp Kit	EchoCLEAN RNA CleanUp Kit
Specifications	Target nucleic acid	DNA RNA	DNA RNA	DNA	RNA	DNA	RNA	DNA	DNA	RNA	DNA	DNA	DNA	DNA	RNA
	Available formats	Plate	Spin column	Spin column Plate	Spin column Plate	Spin column Plate	Spin column Plate	Spin column	Spin column	Spin column	Spin column Plate	Spin column Plate	Spin column	Spin column	Spin column
	Input amount	1 swab/ 25 mg stool	1 swab	10–20 mg	Up to 5–10 mg	Up to 2 × 10 ⁶ cells	Up to 2 × 10 ⁶ cells	5 punches (~3 mm)	100–800 mm ² (thickness 10 µm) or 1–15 mg FFPE tissue	100–800 mm ² (thickness 10 µm) or 1–15 mg FFPE tissue	1 swab	2–30 mg	Up to 100 µL	Up to 100 µL	Up to 100 µL
	Elution volume	90 µL	90 µL	100 µL	80 µL	100 µL	100 µL	100 µL	80 µL	80 µL	100 µL	100 µL	100 µL	100 µL	100 µL
	Yield/ copies per mL	1 × 10 ³ – 1 × 10 ⁶ cp/mL	1 × 10 ³ – 1 × 10 ⁶ cp/mL	5–2 µg	7–14 µg*	15–30 µg	30 µg*	1–2 µg	*	*	1–3 µg	2–8 µg	*	*	*
Sample type	Dry swabs	■	■								■				
	Swabs in transport media	■	■												
	Stool	■													
	Human/animal tissue			■	■										
	Human/animal cell culture					■	■								
	Dried blood spots (DBS)							■							
	FFPE tissue							■	■						
	Plant											■			
	DNA												■	■	
	RNA														■
Sample condition	Fresh	■	■	■	■	■	■	■			■	■			
	Frozen	■		■	■	■	■					■			
	Stabilized	■	■	■	■	■	■	■							
	Formalin-fixed paraffin-embedded							■	■						
Downstream applications	End point and real time PCR based-methods	■	■	■	■	■	■	■	■	■	■	■	■	■	■
	Capillary gel electrophoresis based-methods	■	■	■	■	■	■	■	■	■	■	■	■	■	■
	Next-generation sequencing (NGS)	■	■	■	■	■	■	■	■	■	■	■	■	■	■
	Microarrays	■	■	■	■	■	■	■	■	■	■	■	■	■	■
Typical application fields	Diagnosis of infectious diseases	■													
	Oncology			■	■	■	■		■	■					
	Agricultural biotechnology			■	■			■			■	■	■	■	■
	Biopharma and biotech R&D	■	■	■	■	■	■	■	■	■	■	■	■	■	■
	Academic and basic research	■	■	■	■	■	■	■	■	■	■	■	■	■	■

* Depends on input material

Product overview



contact@bioecho.de



orders@bioecho.de



BioEcho Life Sciences GmbH
Biocampus Cologne, Main Building
Nattermannallee 1
50829 Köln/Cologne, Germany



www.bioecho.com

orders_US@bioecho.com

BioEcho Life Sciences, Inc.
400 Tradecenter Drive, Suite 6900
Woburn, MA 01801
United States



www.bioecho.com